

Small Wheel Loaders

Aggregate Handler Arrangements



	924K	930K	938K
Engine Model*	Cat® C6.6 ACERT™	Cat C6.6 ACERT	Cat C6.6 ACERT
Maximum Gross Power:			
ISO 14396	109 kW (146 hp)	119 kW (160 hp)	129 kW (173 hp)
ISO 14396 (DIN)	109 kW (148 hp)	119 kW (162 hp)	129 kW (175 hp)
Bucket Capacity	2.5 m³ (3.3 yd³)	2.7 m³ (3.5 yd³)	3.2 m³ (4.2 yd³)
Full Turn Tip Load	8076 kg (17,805 lb)	8979 kg (19,790 lb)	10 299 kg (22,700 lb)
Operating Weight	13 126 kg (28,930 lb)	14 134 kg (31,152 lb)	16 037 kg (35,345 lb)

*Engine meets U.S. EPA Tier 4 Interim/EU Stage IIIB emission standards.

Experience the Difference.

Purpose Built Configuration

Maximize your productivity while keeping your operating costs low. Cat Aggregate Handlers are built for sand and gravel rehandling to maximize your profits.

Cab and Controls

Large, spacious cab features excellent visibility to the front and rear, extremely low sound levels and low-effort ergonomic joystick controls so you can concentrate on your work. In cab adjustments are easy with intuitive controls and an easy to read optional display.

Intelligent Power Management

A smooth, step-less electronically controlled hydrostatic transmission provides adjustable power to the ground and superb groundspeed control for fast digging cycles and the flexibility to efficiently perform a multitude of tasks.

Powerful Predictable Hydraulics

The system senses demand and adjusts flow and pressure to match. Multi-functioning with buckets has never been more efficient.

Serviceability

Daily service points are easily accessible from ground level. Extended service intervals and excellent service access make daily checks quick and easy, allowing you to get to work sooner.

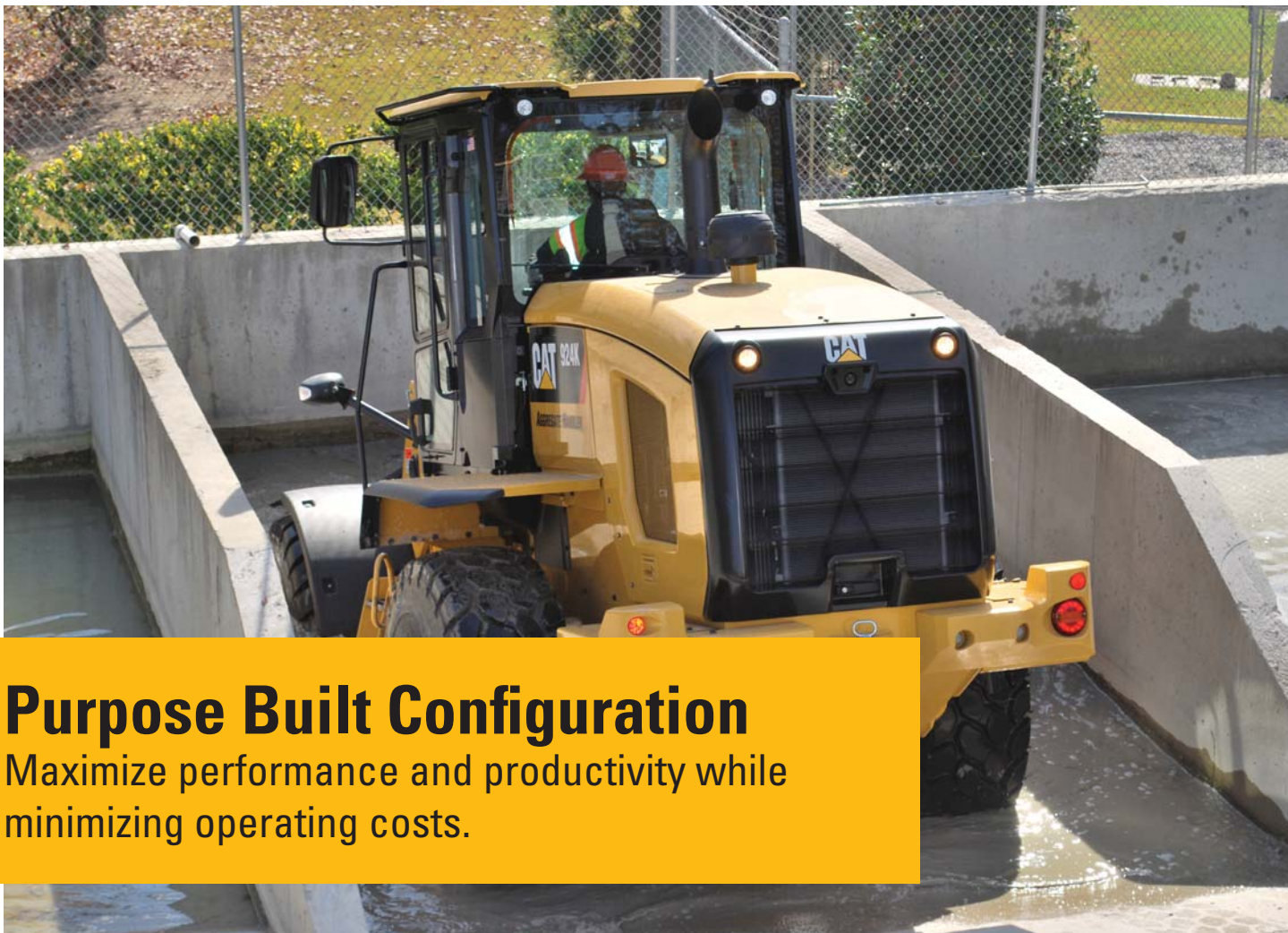
Contents

Purpose Built Configuration	4
Industry Leading Operator Station.....	5
Power Train.....	6
Hydraulics	7
Options.....	8
Serviceability and Customer Support.....	9
Aggregate Handler Specifications	10
Bucket Specifications.....	17
Supplemental Specifications.....	19
Standard Equipment.....	20
Optional Equipment.....	21
Notes.....	22





The Cat 924K, 930K and 938K Aggregate Handlers set a new standard for productivity, fuel efficiency and comfort. Extremely low sound levels, large spacious cab and intuitive controls keep you working comfortably all day long. The new optimized Z-bar loader linkage combined with long wear life Performance Series buckets delivers improved performance and bucket longevity. Experience the new industry benchmark.



Purpose Built Configuration

Maximize performance and productivity while minimizing operating costs.



Sand and Gravel Performance Series Buckets

Performance Series Buckets utilize a system-based approach to balance bucket shape with the machine's linkage, weight, lift and tilt capacities. They deliver higher fill factors and better material retention for significant productivity and fuel efficiency improvements. The buckets feature a longer floor, open throat, curved side bars and additional serviceable wear plates.

Belly Mounted Counterweight

Additional counterweight improves stability without reducing ground clearance or departure angle to maximize performance.

Elevated Breathers (Optional)

Increase your fording depths with optional elevated breathers. Remote mounted air filters are mounted high on the machine for the front and rear axles along with the hydrostatic gear box. Clean out settling ponds without contamination.



Industry Leading Operator Station

Superior visibility, ergonomics and comfort.



Best Seat on the Job Site

Enjoy all day comfort in the spacious new K Series cab:

- Extremely low sound levels.
- Superior visibility to the work tool due to wide curved windshield, redesigned Z-bar linkage, lines routing and work tool design.
- Automatic climate control.
- A heated and ventilated seat option is available for added comfort in a wide range of climates.
- Seat-mounted, ergonomic joystick for lift and tilt functions. Joystick includes integrated Forward/Neutral/Reverse switch and differential lock trigger.
- Easy access to the cab with ergonomically placed grab rails, walk-up steps and large platform.

Easy to Use Instrument Panel and Display

An optional* secondary display provides easy access to vital machine parameters and works in conjunction with the standard soft touch panel to allow real time adjustments.

- Machine information and diagnostics at a glance.
- Real time and historic fuel usage.
- Backup camera display.
- Help button plus 22 language capability.
- Adjustment of functions such as creep, throttle and rimpull.

*Standard feature in Europe.



Power Train

Maximum machine power, reduced fuel consumption.



Intelligent Power Management

The Caterpillar exclusive Intelligent Power Management system actively monitors operator input and power availability to keep the machine working at peak efficiency.

Engine

The Cat C6.6 ACERT engine provides reduced emissions, quieter operation while delivering superior performance and durability. The engine meets U.S. EPA Tier 4 Interim and EU Stage IIIB emission standards. Maximum engine speed is now 1,800 rpm for reduced fuel consumption and lower sound levels. The engine also features:

- Passive regeneration system.
- Diesel particulate filter that is matched to the anticipated engine overhaul life.
- Class-leading fuel efficiency, significantly reducing owning and operating costs.
- Configurable auto idle shut down feature as standard equipment.

Transmission

A smooth, step-less electronically controlled hydrostatic transmission provides adjustable power to the ground and superb groundspeed control for a multitude of tasks.

- Four speed ranges ensure maximum controllability for any task.
- Rimpull control enables you to match available tractive power to underfoot conditions, helping reduce tire wear.
- Throttle lock feature allows you to maintain constant engine RPM regardless of machine speed.

Axles and Brakes

Fully locking front differential axles are standard and can be engaged at full torque on the go with a button on the joystick. Limited slip differentials are optional on the rear. Brake system includes independent service brakes on front and rear axles and a spring applied, electronically activated park brake.

Hydraulics

Smooth, efficient operation helps you get the job done faster.

Load-Sensing Hydraulic System

K Series machines feature a new electro-hydraulic control system that is governed by the Intelligent Power Management system. The load-sensing, variable flow system senses work demand and adjusts flow and pressure to match. This allows full hydraulic forces at any engine speed.

- Programmable in-cab kick-outs are easy to set on the go for tilt, lower and lift. This feature is ideal for applications where the work cycle is repeatable.
- Caterpillar exclusive electro-hydraulic snubbing at programmed kickouts and rack/dump stops greatly improves operator comfort and component life in addition to improved material retention.
- Optional Ride Control System provides an even smoother ride and excellent material retention.
- Designed with dedicated pumps for steering and implements so there is no compromise in cycle times and efficiency for multi-function operation.



Options

Customize your machine to meet your needs.

Configure the Machine the Way You Want It

A variety of options are available on the Cat K Series Wheel Loaders to suit your specific application needs. See your Cat dealer for more information about the features below and additional options.



HID Lights



Turbine Precleaner



*Rear Camera in Grill**



Cold Start Package



Product Link™



*Bucket Corner Guards***



Power Train Side Guards



Lower Power Train Guard



Front Axle Breather



*Rear Axle Breather/
Gearbox Breather*



Reversing Fan



Ride Control

Additional options include:

- Driveshaft Guard
- Crankcase Guard
- Full Coverage Fenders
- Electric Mirror Adjustment/Heated Mirrors*
- Optional Toolbox

*Standard equipment in Europe.

**Only available from dealer.

Serviceability

Easy service to keep your machine working.



All service points are accessible from ground level. Three large service doors can be opened and closed in any order to give full access to filters and service points. Extended service intervals reduce service time and maximize uptime. Additional service features include:

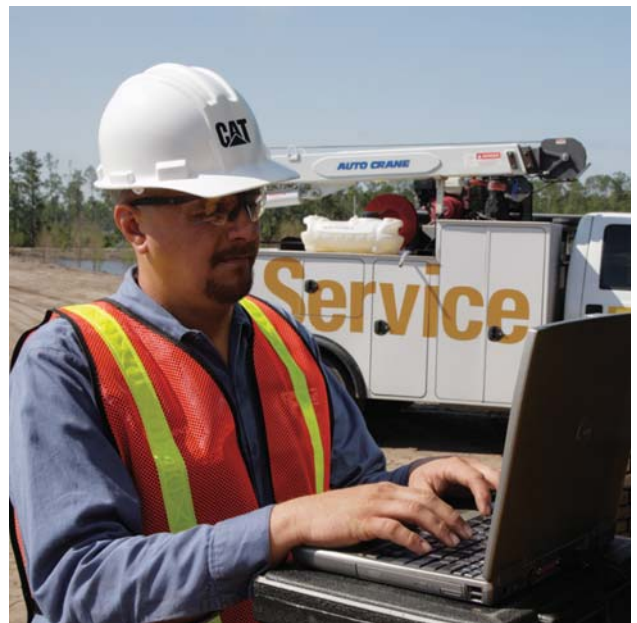
- Diesel particulate filter that is matched for anticipated engine overhaul life. Passive regeneration system requires no operator interaction.
- Caterpillar exclusive electric fuel priming pump.
- Jump start studs as standard equipment.
- Single plane cooling system with 6 fins per inch coolers as standard.
- Swing-up air conditioner condenser for easy clean out.
- Product Link™ ready (standard).

Customer Support

Unmatched support makes the difference.

Renowned Cat Dealer Support

Your Cat dealer is ready to help you every step of the way. From new or used machine sales, to rental or rebuild options, your Cat dealer can provide an optimal solution to your business needs. Unsurpassed worldwide parts availability, trained technicians and customer support agreements maximize your machine uptime.



Small Wheel Loaders Aggregate Handler Specifications

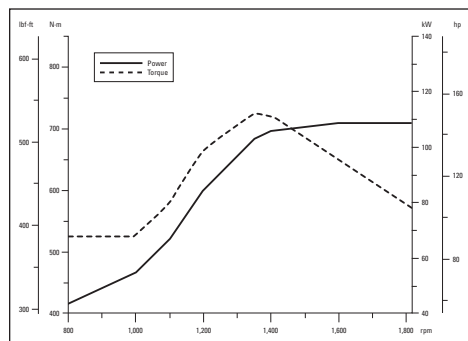
Engine

	924K		930K		938K	
Engine Model	Cat C6.6 ACERT		Cat C6.6 ACERT		Cat C6.6 ACERT	
Maximum Gross Power						
ISO 14396	109 kW	146 hp	119 kW	160 hp	129 kW	173 hp
ISO 14396 (DIN)	109 kW	148 hp	119 kW	162 hp	129 kW	175 hp
Rated Net Power @ 1,800 rpm						
SAE J1349	105 kW	141 hp	115 kW	154 hp	126 kW	169 hp
ISO 9249 (1977)/EEC 80/1269	106 kW	142 hp	116 kW	156 hp	127 kW	170 hp
ISO 9249 (DIN)	106 kW	144 hp	116 kW	158 hp	127 kW	173 hp
Maximum Gross Torque						
ISO 14396	725 N·m	534 lbf-ft	775 N·m	571 lbf-ft	825 N·m	608 lbf-ft
Maximum Net Torque						
SAE J1349	699 N·m	515 lbf-ft	748 N·m	551 lbf-ft	802 N·m	591 lbf-ft
ISO 9249 (1977)/EEC 80/1269	706 N·m	520 lbf-ft	756 N·m	557 lbf-ft	811 N·m	598 lbf-ft
Displacement	6.6 L	402 in³	6.6 L	402 in³	6.6 L	402 in³
Bore	105 mm	4 in	105 mm	4 in	105 mm	4 in
Stroke	127 mm	5 in	127 mm	5 in	127 mm	5 in

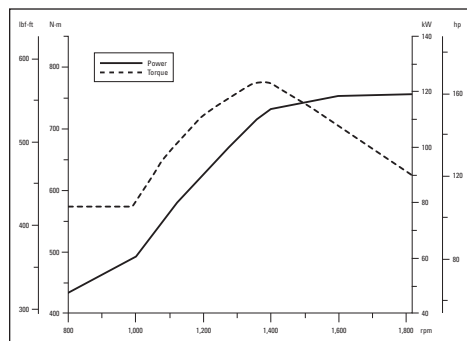
- Net power ratings are tested at the reference conditions for the specified standard.
- Net power shown is the power available at the flywheel when the engine is equipped with alternator, air cleaner, diesel exhaust filter, and fan at minimum speed.
- No derating required up to 3000 m (10,000 ft) altitude. Auto derate protects hydraulic and transmission systems.
- Flywheel per the SAE reference conditions when the fan is at maximum speed.
- Cat C6.6 engine meets U.S. EPA Tier 4 Interim (EU Stage IIIB) emission requirements.
- K Series Small Wheel Loaders have a passive regeneration system with a long life Diesel Particulate Filter.

Engine Power and Torque

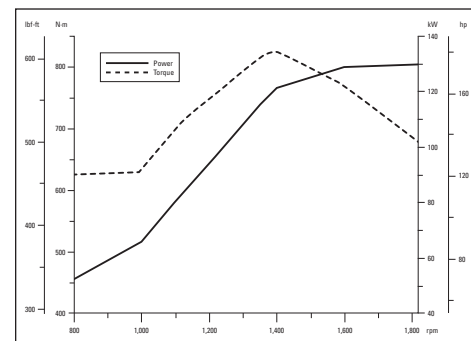
924K



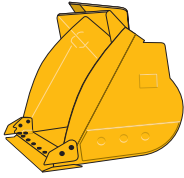
930K



938K



Buckets



- Performance Series Buckets utilize a long floor and open throat resulting in easy loading and good material retention.

	924K		930K		938K	
Sand and gravel	2.5 m ³	3.3 yd ³	2.7 m ³	3.5 yd ³	3.2 m ³	4.2 yd ³

Weights

	924K		930K		938K	
Operating weight	13 126 kg	28,930 lb	14 134 kg	31,152 lb	16 037 kg	35,345 lb

- Specifications shown are for a machine configured with sand and gravel pin-on bucket, bolt-on cutting edges, logger counterweights, additional guarding, 80 kg (176 lb) operator, and Michelin 20.5 R25 (L-3) XHA2 tires.
 - 924K is configured with a 2.5 m³ (3.3 yd³) pin-on bucket with bolt-on cutting edge.
 - 930K is configured with a 2.7 m³ (3.5 yd³) pin-on bucket with bolt-on cutting edge.
 - 938K is configured with a 3.2 m³ (4.2 yd³) pin-on bucket with bolt-on cutting edge.

Steering



- Steering system uses a dedicated load sensing variable displacement pump with dual double acting cylinders.

	924K		930K		938K	
Steering articulation angle each direction	40°		40°		40°	
Steering cylinder: double acting						
Bore diameter	70 mm	2.8 in	70 mm	2.8 in	80 mm	3.1 in
Rod diameter	40 mm	1.6 in	40 mm	1.6 in	50 mm	2 in
Stroke	438 mm	17.2 in	438 mm	17.2 in	399 mm	15.7 in
Maximum flow – steering pump	130 L/min	34 gal/min	130 L/min	34 gal/min	130 L/min	34 gal/min
Maximum working pressure – steering pump	24 130 kPa	3,500 psi	24 130 kPa	3,500 psi	24 130 kPa	3,500 psi
Maximum steering torque						
0° (straight machine)	50 375 N·m	37,155 lbf-ft	50 375 N·m	37,155 lbf-ft	57 630 N·m	42,506 lbf-ft
40° (full turn)	37 620 N·m	27,747 lbf-ft	37 620 N·m	27,747 lbf-ft	42 570 N·m	31,398 lbf-ft
Steering cycle times (full left to full right)						
800 rpm: pump flow limited	2.8 seconds		2.8 seconds		3.1 seconds	
1,800 rpm: 90 rpm steering wheel speed	2.4 seconds		2.4 seconds		2.3 seconds	
Number of steering wheel turns						
Full left to full right or full right to full left	3.5 turns		3.5 turns		3.3 turns	

Small Wheel Loaders Aggregate Handler Specifications

Loader Hydraulic System



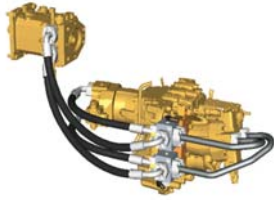
- Implement system uses a dedicated load sensing variable displacement pump with dual double acting lift cylinders and a single double acting tilt cylinder.

	924K		930K		938K	
Maximum flow – implement pump	150 L/min	40 gal/min	190 L/min	50 gal/min	190 L/min	50 gal/min
Maximum working pressure – implement pump	26 000 kPa	3,771 psi	25 000 kPa	3,626 psi	28 000 kPa	4,061 psi
Relief pressure – tilt cylinder	28 000 kPa	4,061 psi	28 000 kPa	4,061 psi	30 000 kPa	4,351 psi
Lift cylinder: double acting						
Bore diameter	110 mm	4.3 in	120 mm	4.7 in	120 mm	4.7 in
Rod diameter	60 mm	2.4 in	65 mm	2.6 in	65 mm	2.6 in
Stroke	728 mm	28.7 in	728 mm	28.7 in	789 mm	31.1 in
Tilt cylinder: double acting						
Bore diameter	130 mm	5.1 in	150 mm	5.9 in	150 mm	5.9 in
Rod diameter	70 mm	2.8 in	90 mm	3.5 in	90 mm	3.5 in
Stroke	555 mm	21.9 in	555 mm	21.9 in	555 mm	21.9 in
Hydraulic cycle times (1,800 rpm)						
Raise (ground level to maximum lift)	5.5 seconds		5.1 seconds		5.5 seconds	
Dump (at maximum lift height)	1.5 seconds		1.5 seconds		1.5 seconds	
Float down (maximum lift to ground level)	2.6 seconds		2.7 seconds		2.7 seconds	
Total cycle time	9.6 seconds		9.3 seconds		9.7 seconds	
Hydraulic cycle times (1,000 rpm)						
Raise (ground level to maximum lift)	9.6 seconds		9.1 seconds		9.8 seconds	
Dump (at maximum lift height)	3.0 seconds		2.6 seconds		2.6 seconds	
Float down (maximum lift to ground level)	2.6 seconds		2.7 seconds		2.7 seconds	

Service Refill Capacities

	924K		930K		938K	
Fuel tank	195 L	51.5 gal	195 L	51.5 gal	195 L	51.5 gal
Cooling system	30 L	7.9 gal	30 L	7.9 gal	32 L	8.5 gal
Engine crankcase	19.5 L	5.1 gal	19.5 L	5.1 gal	19.5 L	5.1 gal
Transmission (gear box)	8.5 L	2.2 gal	8.5 L	2.2 gal	11 L	2.9 gal
Axles						
Front	21 L	5.5 gal	26 L	6.9 gal	35 L	9.2 gal
Rear	21 L	5.5 gal	25 L	6.6 gal	35 L	9.2 gal
Hydraulic system (including tank)	160 L	42.3 gal	165 L	43.6 gal	170 L	44.9 gal
Hydraulic tank	90 L	23.8 gal	90 L	23.8 gal	90 L	23.8 gal

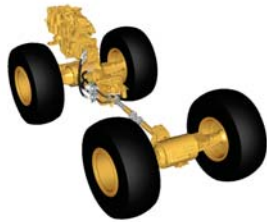
Transmission



*Creeper control allows maximum speed range adjustability from 1 km/h (0.6 mph) to 13 km/h (8 mph) in Range 1 through the secondary display when equipped. Factory default is 7 km/h (4.4 mph).

	924K		930K		938K	
Forward						
Range 1*	1-13 km/h	0.6-8.0 mph	1-13 km/h	0.6-8.0 mph	1-13 km/h	0.6-8.0 mph
Range 2	13 km/h	8 mph	13 km/h	8 mph	13 km/h	8 mph
Range 3	27 km/h	17 mph	27 km/h	17 mph	27 km/h	17 mph
Range 4	40 km/h	25 mph	40 km/h	25 mph	40 km/h	25 mph
Reverse						
Range 1*	1-13 km/h	0.6-8.0 mph	1-13 km/h	0.6-8.0 mph	1-13 km/h	0.6-8.0 mph
Range 2	13 km/h	8 mph	13 km/h	8 mph	13 km/h	8 mph
Range 3	27 km/h	17 mph	27 km/h	17 mph	27 km/h	17 mph
Range 4	40 km/h	25 mph	40 km/h	25 mph	40 km/h	25 mph

Power Train



• Power train is governed by the Caterpillar exclusive Intelligent Power Management system to deliver peak performance and efficiency.

**Differential front locking axle can be engaged on the go at full torque up to 10 km/h (6.2 mph) on the 924K/930K and up to 20 km/h (12.4 mph) on the 938K.

	924K	930K	938K
Front axle	Fixed	Fixed	Fixed
Traction aid**	Locking differential standard	Locking differential standard	Locking differential standard
Rear axle	Oscillating	Oscillating	Oscillating
Oscillation with 20.5 tires	± 11 degrees	± 11 degrees	± 11 degrees
Traction aid	Limited slip differential optional	Limited slip differential optional	Limited slip differential optional
Brakes			
Service brakes	Inboard wet disc	Inboard wet disc	Outboard wet disc
Park brake	Spring applied hydraulically released	Spring applied hydraulically released	Spring applied hydraulically released

Small Wheel Loaders Aggregate Handler Specifications

Tires

	924K	930K	938K
20.5-25, 12PR (L-2)	Yes	Yes	Yes
20.5-25, 12PR (L-3)	Yes	Yes	Yes
20.5-25, 16PR (L-5)	Yes	Yes	Yes
20.5 R25, radial (L-2)	Yes	Yes	Yes
20.5 R25, radial (L-3)*	Yes	Yes	Yes
20.5 R25, radial (L-5)	Yes	Yes	Yes
550/65 R25, radial (L-3)	Yes		
600/65 R25, radial (L-3)		Yes	
650/65 R25, radial (L-3)			Yes

*Standard tire.

- Other tire choices available, contact your Cat dealer for details. Not all tires are available in all regions.
- In certain applications, the loader's productive capabilities may exceed the tires' tonnes-km/h (ton-mph) capabilities.
- Caterpillar recommends that you consult a tire supplier to evaluate all conditions before selecting a tire model.

Cab



- ROPS: SAE J1040 MAY94, ISO 3471-1994.
- FOPS: SAE J/ISO 3449 APR98, Level II, ISO 3449 1992 Level II.
- Cat cab and Rollover Protective Structures (ROPS) are standard in North America and Europe.
- The declared dynamic operator sound pressure levels per ISO 6396:2008**, when properly installed and maintained, are:
 - Standard cab: 68 ±3 dB(A)
 - Deluxe cab: 66 ±2 dB(A)

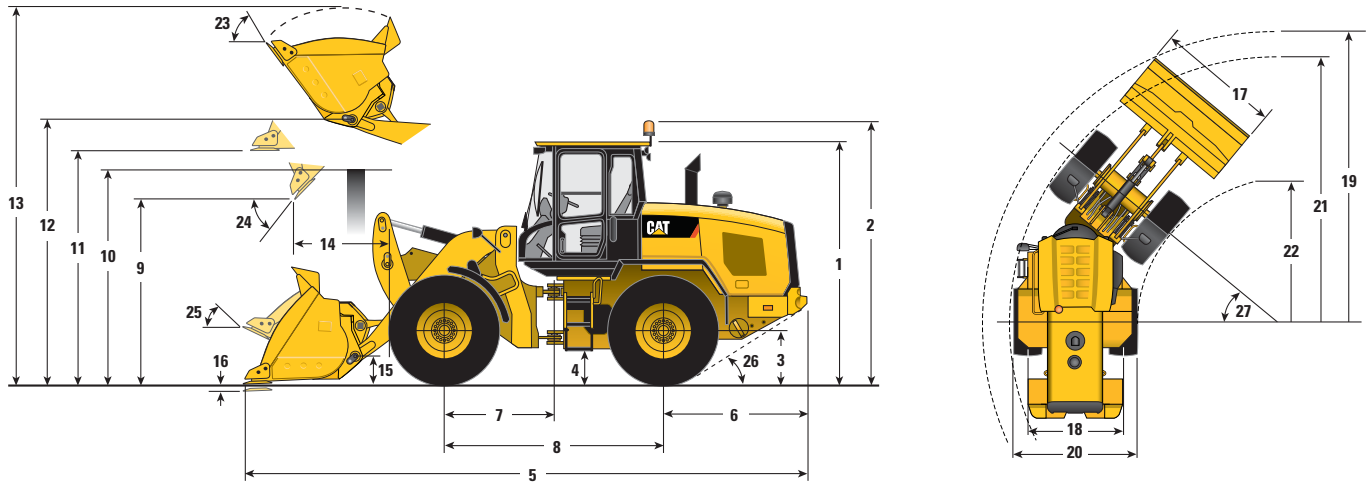
**The measurements were conducted with the cab doors and windows closed and at 70% of the maximum engine cooling fan speed. The sound level may vary at different engine cooling fan speeds.

Operating Specifications

	924K		930K		938K	
Tipping load – straight (ISO 14397-1)	9409 kg	20,743 lb	10 521 kg	23,188 lb	12 099 kg	26,667 lb
Tipping load – full turn (ISO 14397-1)	8076 kg	17,805 lb	8979 kg	19,790 lb	10 299 kg	22,700 lb
Clearance: full lift and 45° dump	2807 mm	111 in	2761 mm	109 in	2786 mm	110 in
Reach: full lift and 45° dump	1070 mm	42 in	1109 mm	44 in	1178 mm	46 in
Steering articulation angle each direction	40°		40°		40°	

Dimensions with Bucket

All dimensions are approximate. Dimensions will vary with bucket and tire choice. Refer to Operating Specifications with Buckets.



Standard Lift

	924K		930K		938K	
** 1 Height: ground to cab	3340 mm	10'11"	3340 mm	10'11"	3340 mm	10'11"
** 2 Height: ground to beacon	3669 mm	12'0"	3669 mm	12'0"	3669 mm	12'0"
** 3 Height: ground axle center	685 mm	2'2"	685 mm	2'2"	685 mm	2'2"
** 4 Height: ground clearance	397 mm	1'3"	397 mm	1'3"	386 mm	1'3"
* 5 Length: overall	7544 mm	24'9"	7613 mm	24'11"	7715 mm	25'3"
6 Length: rear axle to bumper	1968 mm	6'5"	1993 mm	6'6"	1968 mm	6'5"
7 Length: hitch to front axle	1500 mm	4'11"	1500 mm	4'11"	1525 mm	5'0"
8 Length: wheel base	3000 mm	9'10"	3000 mm	9'10"	3050 mm	10'0"
* 9 Clearance: bucket at 45°	2807 mm	9'3"	2761 mm	9'0"	2786 mm	9'1"
** 10 Clearance: load over height	3330 mm	10'11"	3331 mm	10'11"	3354 mm	11'0"
** 11 Clearance: level bucket	3580 mm	11'8"	3580 mm	11'8"	3642 mm	11'11"
** 12 Height: bucket pin	3907 mm	12'9"	3907 mm	12'9"	3969 mm	13'0"
** 13 Height: overall	5180 mm	16'11"	5239 mm	17'2"	5411 mm	17'9"
* 14 Reach: bucket at 45°	1070 mm	3'6"	1109 mm	3'7"	1178 mm	3'10"
15 Carry height: bucket pin	458 mm	1'6"	458 mm	1'6"	467 mm	1'6"
** 16 Dig depth	100 mm	3.9"	100 mm	3.9"	100 mm	3.9"
17 Width: bucket	2750 mm	9'0"	2750 mm	9'0"	2750 mm	9'0"
18 Width: tread center	1930 mm	6'3"	1930 mm	6'3"	2065 mm	6'9"
19 Turning radius: over bucket	6030 mm	19'9"	6060 mm	19'10"	6150 mm	20'2"
20 Width: over tires	2540 mm	8'4"	2540 mm	8'4"	2675 mm	8'9"
21 Turning radius: outside of tires	5402 mm	17'8"	5402 mm	17'8"	5537 mm	18'1"
22 Turning radius: inside of tires	2851 mm	9'4"	2851 mm	9'4"	2852 mm	9'4"
23 Rack angle at full lift	54°		54°		54°	
24 Dump angle at full lift	48°		48°		48°	
25 Rack angle at carry	45°		45°		45°	
26 Departure angle	33°		33°		33°	
27 Articulation angle	40°		40°		40°	
Operating weight	13 126 kg	28,930 lb	14 134 kg	31,151 lb	16 037 kg	35,344 lb

*Vary with bucket.

**Vary with tire.

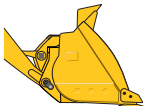
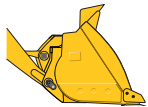
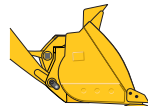
Dimensions listed are for a machine configured with sand and gravel bucket, bolt-on cutting edge, additional counterweights, additional guarding, 80 kg (176 lb) operator and Michelin 20.5 R25 (L-3) XHA2 tires.

Small Wheel Loaders Aggregate Handler Specifications

Supplemental Operating Data – Tires

	924K				930K				938K			
	550/65 R25		20.5-25 (12PR)		600/65 R25		20.5-25 (16PR)		650/65 R25		20.5 R25 (L-5)	
	mm	in	mm	in	mm	in	mm	in	mm	in	mm	in
Vertical heights	-70	-2.8"	-30	-1.2"	-55	-2.2"	-30	-1.2"	-35	-1.4"	-9	-0.4"
Reach: bucket at 45°	+43	+1.7"	+17	+0.7"	+29	+1.1"	+17	+0.7"	-5	-0.2"	-22	-0.9"
Width: over tires	+21	+0.8"	-13	-0.5"	+98	+3.9"	-13	-0.5"	+121	+4.8"	+28	+1.1"
Turning radius: outside of tires	+4	+0.2"	-9	-0.4"	+42	+1.7"	-9	-0.4"	+53	+2.1"	+5	+0.2"
Turning radius: inside of tires	-11	-0.4"	-2	-0.1"	-49	-1.9"	-2	-0.1"	-61	-2.4"	-1	-0"
	kg	lb	kg	lb	kg	lb	kg	lb	kg	lb	kg	lb
Tipping load – straight	-83	-182	-197	-434	+9	+19	-167	-368	+137	+301	+292	+643
Tipping load – full turn	-72	-157	-171	-376	+8	+17	-144	-317	+118	+260	+253	+557
Operating weight	-126	-277	-300	-661	+14	+30	-254	-559	+210	+462	+444	+978

Operating Specifications with Buckets

Aggregate Handler		Pin On		
		 924K	 930K	 938K
Rated capacity	m ³	2.5	2.7	3.2
	yd ³	3.3	3.5	4.2
Struck capacity	m ³	2.3	2.6	3.0
	yd ³	3.0	3.4	3.9
Width: bucket	mm	2750	2750	2750
	ft/in	9'0"	9'0"	9'0"
Nominal material density, 100% fill factor	kg/m ³	1595	1663	1609
	lb/yd ³	2,688	2,827	2,702
Clearance: full lift, 45° dump	mm	2807	2761	2786
	ft/in	9'3"	9'0"	9'1"
Reach: full lift, 45° dump	mm	1070	1109	1178
	ft/in	3'6"	3'7"	3'10"
Reach: 2130 mm (7'0") clearance, 45° dump	mm	1573	1587	1664
	ft/in	5'2"	5'2"	5'5"
Reach: level arm, level bucket	mm	2413	2475	2563
	ft/in	7'11"	8'1"	8'4"
Dig depth	mm	100	100	100
	in	4"	4"	4"
Length: overall	mm	7544	7613	7715
	ft/in	24'9"	24'11"	25'3"
Height: overall	mm	5180	5239	5411
	ft/in	16'11"	17'2"	17'9"
Turning radius, bucket at carry	mm	6030	6060	6150
	ft/in	19'9"	19'10"	20'2"
Tipping load – straight, ISO 14397-1*	kg	9409	10 521	12 099
	lb	20,743	23,188	26,666
Tipping load – straight, rigid tire**	kg	9801	10 959	12 603
	lb	21,604	24,153	27,777
Tipping load – full turn, ISO 14397-1*	kg	8076	8979	10 299
	lb	17,805	19,789	22,698
Tipping load – full turn, rigid tire**	kg	8592	9552	10 957
	lb	18,940	21,052	24,149
Breakout force	kg	9331	11 430	12 506
	lb	20,571	25,191	27,563
Operating weight	kg	13 126	14 134	16 037
	lb	28,929	31,151	35,345

*Full compliance to ISO 14397-1 (2007) Sections 1 through 6, which requires 2% verification between calculation and testing.

**Compliance to ISO 14397-1 (2007) Sections 1 through 5.

Dimensions listed are for machines configured with sand and gravel bucket, bolt-on cutting edge, logger counterweight, additional guarding, 80 kg (176 lb) operator, and Michelin 20.5 R25 (L-3) XHA2 tires at a pressure of 4.14 bar (60 psi) in the front tires and 2.76 bar (40 psi) in the rear tires.

Bucket Specifications

Bucket Selection Table

Bucket Fill Factor				kg/m ³	1400	1440	1480	1520	1560	1600	1640	1680	1720	1760
				lb/yd ³	2,359	2,426	2,494	2,561	2,629	2,696	2,763	2,831	2,898	2,966
				m ³	yd ³									
Aggregate Handler	924K	2.5	3.3		112%	109%	106%	104%	101%	99%	96%			
	930K	2.7	3.5			112%	109%	107%	104%	101%	99%	97%	94%	
	938K	3.2	4.2		115%	112%	109%	106%	103%	101%	98%	96%		

Material density and fill factor are key variables when choosing the appropriate size of the bucket. The long floor and open throat design of the Performance Series Buckets along with the aggressive rack angles of the optimized K Series linkage will demonstrate fill factors greater than 100% ISO rated. Refer to the Fill Factors table for expected fill factor per material density.

Fill Factors

Materials	Density		Fill %
Dry sand	~ 1450 kg/m ³	~ 2,407 lb/yd ³	~ 115%
Aggregates	~ 1600 kg/m ³	~ 2,696 lb/yd ³	~ 105%
Damp sand	~ 1700 kg/m ³	~ 2,822 lb/yd ³	~ 115%

Optional Equipment

	924K				930K				938K			
	Operating weight		Tipping load – full turn with 2.5 m ³ (3.25 yd ³) Pin On bucket		Operating weight		Tipping load – full turn with 2.7 m ³ (3.5 yd ³) Pin On bucket		Operating weight		Tipping load – full turn with 3.2 m ³ (4.2 yd ³) Pin On bucket	
	kg	lb	kg	lb	kg	lb	kg	lb	kg	lb	kg	lb
Change with options removed:												
Belly mounted (logger) counterweight	–400	–882	–594	–1,310	–400	–882	–591	–1,303	–400	–882	–585	–1,290
Guard, crankcase	–11	–24	–15	–33	–11	–24	–15	–33	–11	–24	–15	–33
Guard, power train lower	–77	–170	–74	–163	–77	–170	–73	–161	–68	–150	–64	–141
Guard, driveshaft	–44	–97	–17	–37	–44	–97	–16	–35	–44	–97	–17	–37
Roading fenders	–18	–40	–14	–31	–18	–40	–14	–31	–18	–40	–13	–29
Secondary steering	–69	–152	–70	–154	–69	–152	–70	–154	–69	–152	–69	–152
Ride control	–49	–108	–22	–49	–49	–108	–22	–49	–49	–108	–22	–49
Change with options added:												
Guard, power train side	+11	+24	+10	+22	+11	+24	+10	+22	+11	+24	+10	+22
Cold start package	+54	+119	+93	+205	+54	+119	+92	+203	+54	+119	+91	+201
Optional tool box	+44	+97	+37	+82	+44	+97	+37	+82	+44	+97	+36	+79

Standard Equipment

Standard Equipment

Standard equipment may vary. Consult your Cat dealer for details.

POWER TRAIN

- Axle seal guards
- Auto idle shut down feature
- Brake/decelerator pedal
- Cat C6.6 ACERT engine
 - Meets Tier 4 Interim/Stage IIIB emission standards
 - Turbocharged and aftercooled
 - Filtered crankcase breather
 - Diesel particulate filter
- Coolant protection to -34°C (-29°F)
- Differential lock in front axle
- Differential rear open
- Dry type air cleaner
- Enclosed wet disc full hydraulic brakes
- Fuel priming pump, automatic
- Fuel water separator
- Hydraulically driven demand cooling fan
- Hydrostatic transmission with electronic speed range control
 - 4 speed ranges
 - Rimpull control
 - Creeper control
- Lubed for life driveshafts
- Parking brake, electric
- Single plane cooling system with remote coolant reservoir
- S·O·SSM port, engine, coolant and transmission oil
- Thermal starting aid (glow plugs)
- Throttle lock
- Transmission directional control on implement joystick
- Transmission sight gauge
- Transmission oil cooler (938K only)

HYDRAULICS

- Heavy duty hydraulic cooler
- Hydraulic diagnostic connectors and S·O·S ports
- Hydraulic sight gauge, visible
- Load sensing hydraulics and steering
- Seat-mounted hydraulic controls with F/N/R

ELECTRICAL

- Alternator, 115-amp, heavy duty
- 12V power supply in cab (2)
- Batteries, 1,000 CCA (2)
- 24 volt system
- Back-up alarm
- Battery disconnect switch
- Beacon ready
- Diagnostic connector
- Directional signals front and rear
- Emergency shutdown switch
- Halogen work lights front and rear
- Heavy duty gear reduction starter
- LED rear stop tail turn lights
- Remote jump start post
- Resettable main and critical function breakers
- Rooding lights front and rear

OPERATOR ENVIRONMENT

- 75 mm (3 in) retractable seatbelt
- Automatic temperature control
- Cab, enclosed ROPS/FOPS pressurized and sound suppressed
- Cup holder
- External heated mirrors
- Ground level cab door release
- Gauges
 - Digital direction indicator
 - Digital hour meter and odometer
 - Digital speedometer
 - Engine coolant temperature gauge
 - Fuel level indicator
 - Hydraulic oil temperature gauge
 - Tachometer
- Hydraulic control lockout
- Interior cab lighting, door and dome
- Interior rearview mirrors (2)
- Lunch box storage
- Operator warning system indicators
- Radio ready speakers
- Rear window defrost, electric
- Removable floormat
- Seat-mounted electronic implement controls, adjustable
- Sliding glass on the side windows
- Steering column mounted multi function control – lights, wipers, turn signal
- Suspension seat, fabric
- Tilt and telescopic steering wheel
- Tinted front glass
- Wet arm wiper/washer, 2-speed and intermittent, front
- Wet arm wiper/washer, rear

OTHER STANDARD EQUIPMENT

- Automatic bucket/fork positioner, adjustable in-cab
- Automatic lift and bucket kickouts, adjustable in-cab
- Counterweight, heavy
- Counterweight, logger package
- Fenders
- Large-access enclosure doors with adjustable close/open force
- Parallel lift loader linkage with sealed pins
- Recovery hitch with pin
- Remote mounted lubrication points
- Toolbox, lockable
- Vandalism protection – lockable compartments

EU STANDARD EQUIPMENT

- Deluxe cab
- Secondary display
- Rearview camera

NOTE: Not all features are available in all regions. See your Cat dealer for more information.

Optional Equipment

Optional equipment may vary. Consult your Cat dealer for details.

- Antifreeze/coolant, extended-life, protects to –50° C (–58° F)
- Axles, differential, limited slip, rear
- Beacon light, rotating or strobe
- Bucket corner guards (dealer only)
- Cab, deluxe includes
(standard in Europe, optional in North America):
 - Automatic blower control
 - Electrically adjustable external heated mirrors (2)
 - LED interior lighting
 - Secondary display
 - Sunscreen
 - Visor
- Camera, rearview (standard in Europe)
- Cold start package:
 - Ether starting aid
 - Block heater
 - Additional batteries (2)
- Coupler, Fusion
- Coupler, ISO 23727
- Coupler, jumper lines, third function
- Debris package
- Debris package – cleaning arrangement
- Elevated breathers
 - Front and rear axles
 - Hydrostatic gearbox
- Fenders, roading
- Fenders, full coverage
- Guards
 - Power train, lower
 - Power train, side
 - Crankcase
 - Driveshaft
 - Windshield
- Hydraulic control auxiliary, third and fourth function
- Jumper lines, third function
- Linkage, high lift
- Lights, auxiliary, halogen or HID
- Machine Security System
- Product Link
- Radio packages:
 - Radio ready with Bluetooth interface, microphone and auxiliary inputs for MP3 players
 - Radio, AM/FM with CD player
 - Radio, AM/FM with CD player deluxe, Bluetooth interface, microphone and auxiliary inputs for MP3 players
- Ride Control System
- Seats:
 - Deluxe seat – fully adjustable fabric air suspension seat with high seat backrest
 - Premium seat – fully adjustable heated fabric air suspension seat with high seat backrest and lumbar support. Seat is heated and ventilated on bottom cushion and backrest.
- Steering:
 - Dual mode
 - Secondary
- Tires:
 - Bias ply, 20.5-25
 - Radial, 20.5 R25, 550/65 R25, 650/65 R25
- Toolbox, additional
- Work tools

NOTE: Not all features are available in all regions. See your Cat dealer for more information.

Small Wheel Loaders Aggregate Handler Arrangements

For more complete information on Cat products, dealer services, and industry solutions, visit us on the web at www.cat.com

© 2013 Caterpillar Inc.
All rights reserved

Materials and specifications are subject to change without notice. Featured machines in photos may include additional equipment. See your Cat dealer for available options.

CAT, CATERPILLAR, SAFETY.CAT.COM, their respective logos, "Caterpillar Yellow" and the "Power Edge" trade dress, as well as corporate and product identity used herein, are trademarks of Caterpillar and may not be used without permission.

AEHQ6969 (03-2013)

