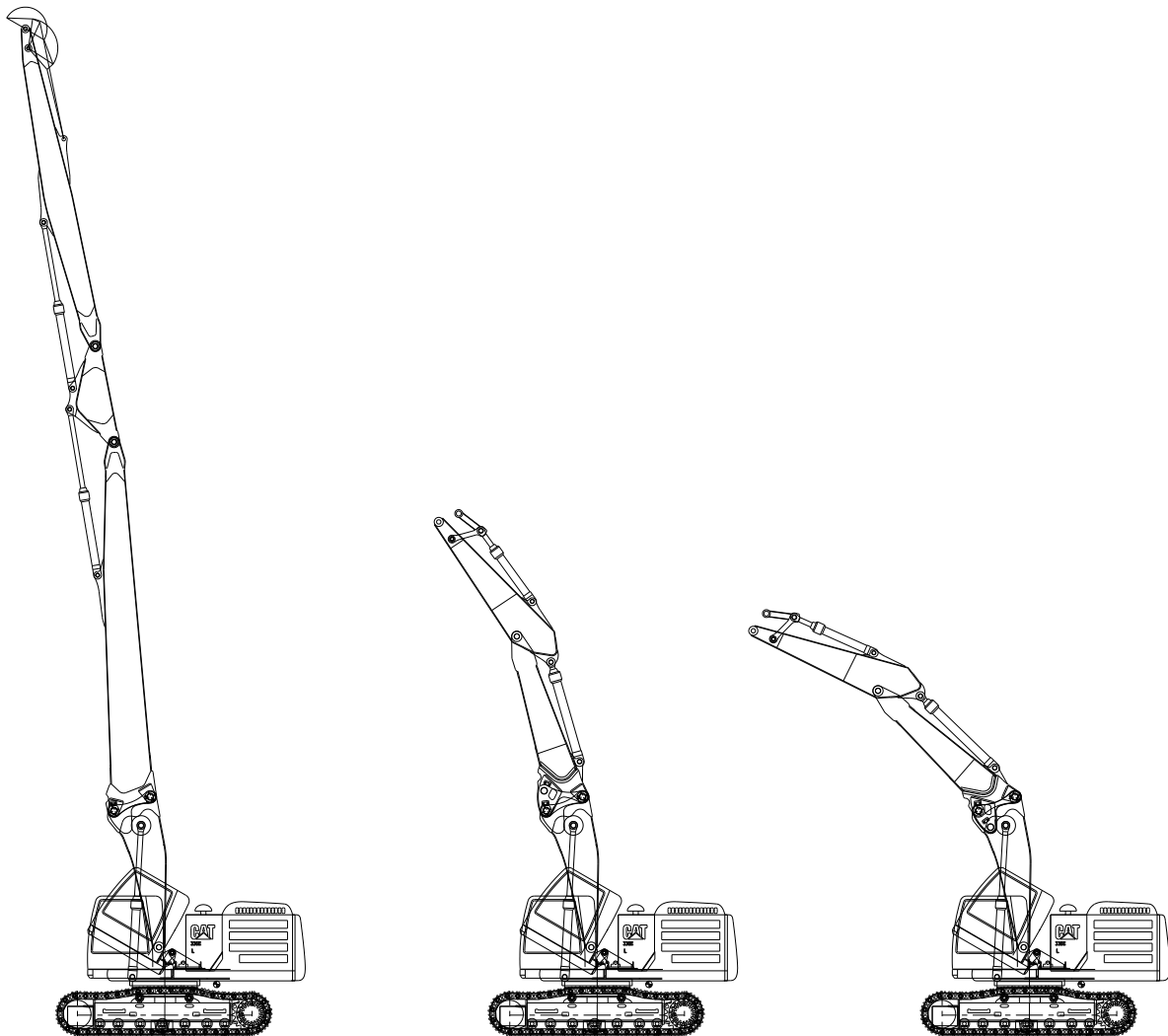


Cat 336E UHD



STC BV
Vosmatenweg 3
NL-7742 SX Coevorden
www.stcbv.nl



Engine

Engine model Cat® C9.3 ACERT™

Nett Power - ISO 14396 236 kW (321 hp)

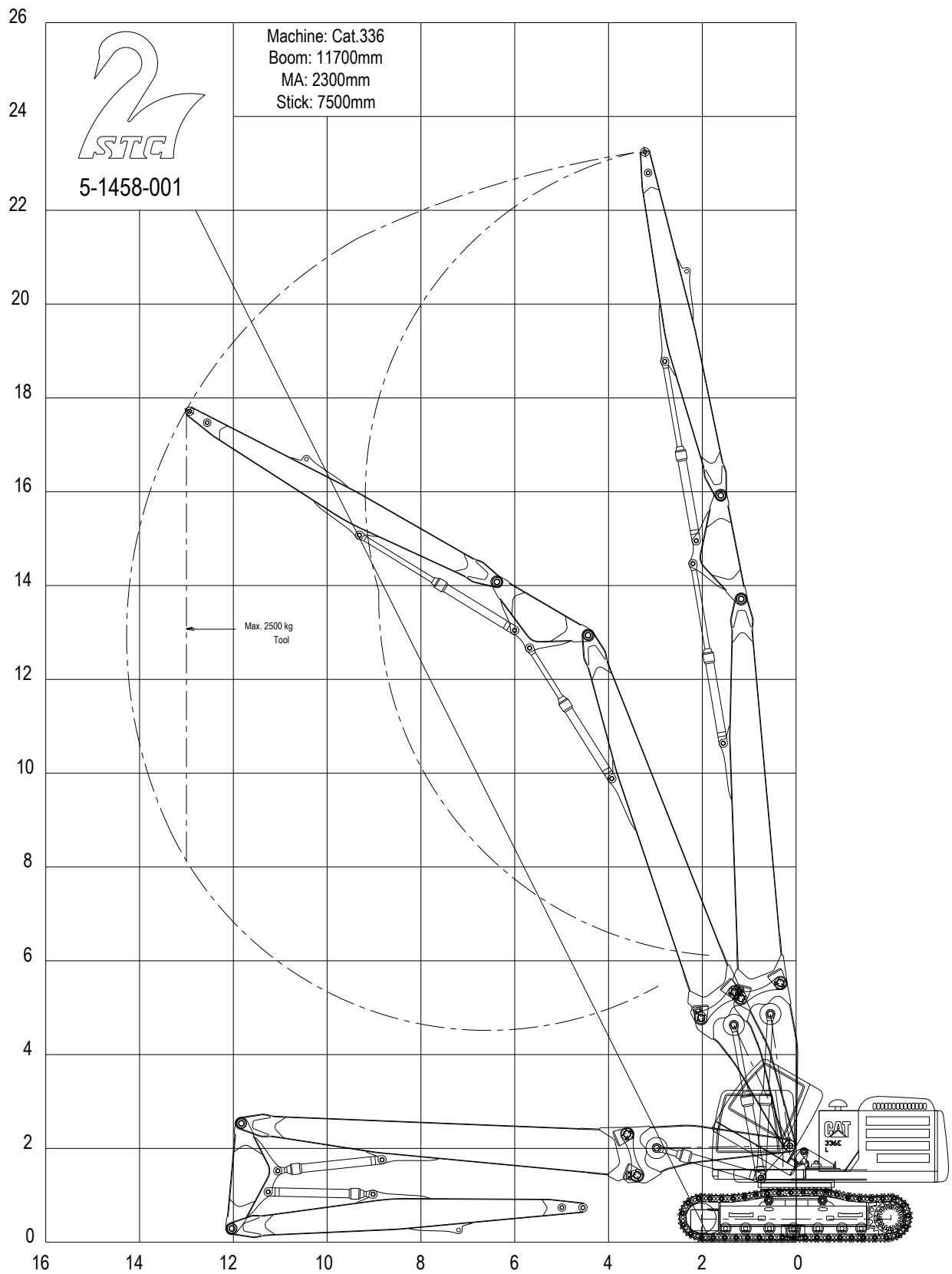
Weight

Operating weight approximately 50.000 kg

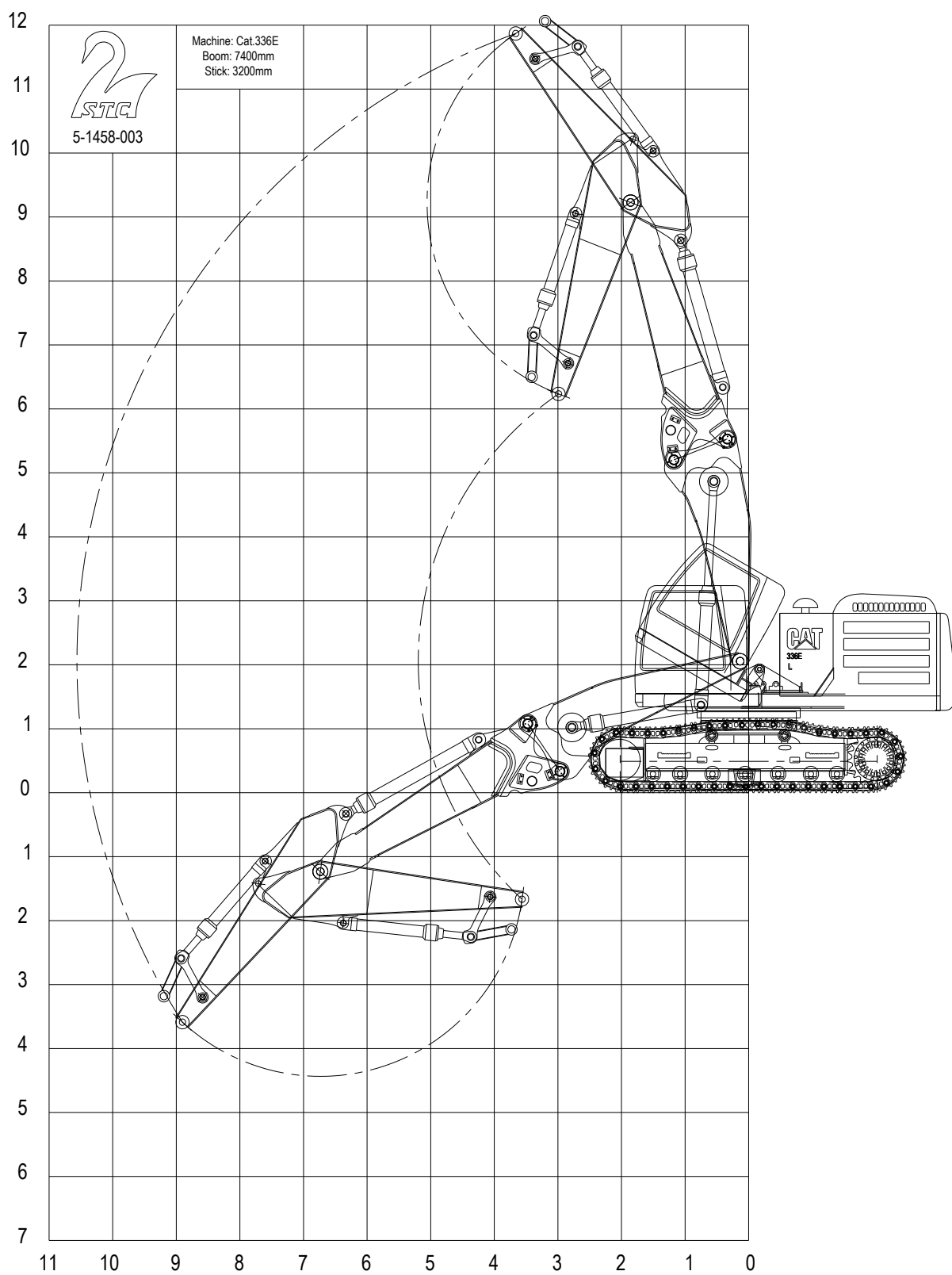
Working height

Maximum pin height 23 meter Maximum safe working height 19,5 meter

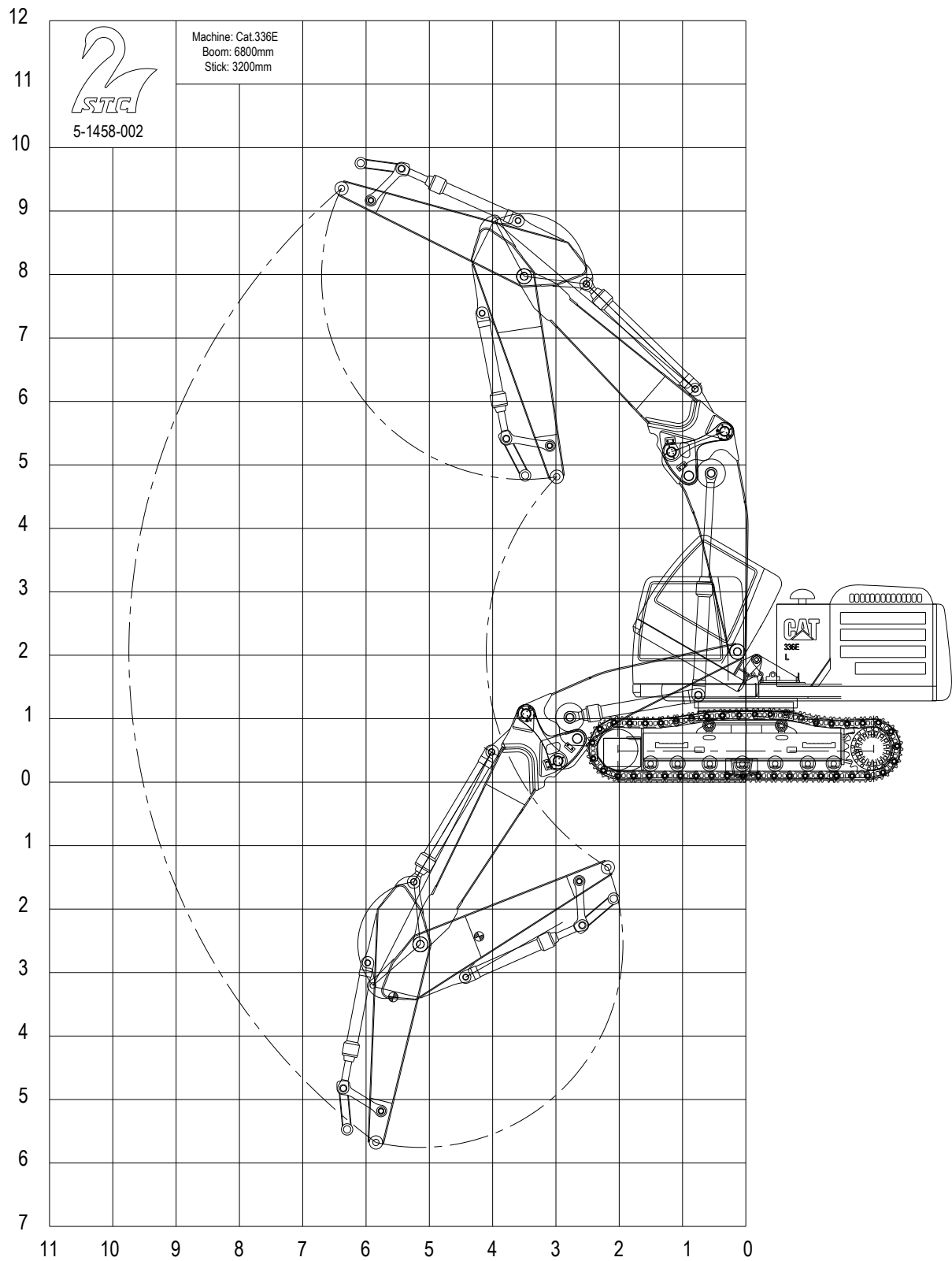
Pin height 23 meters



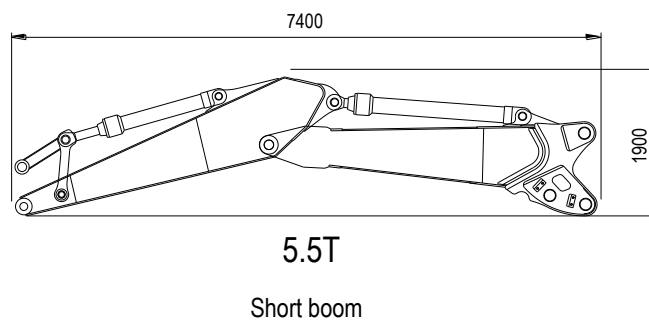
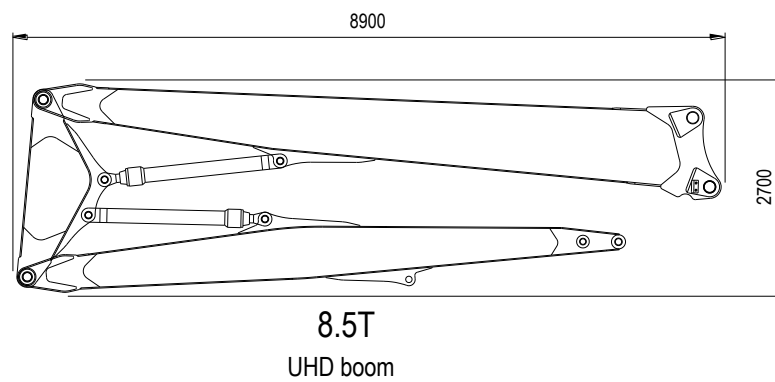
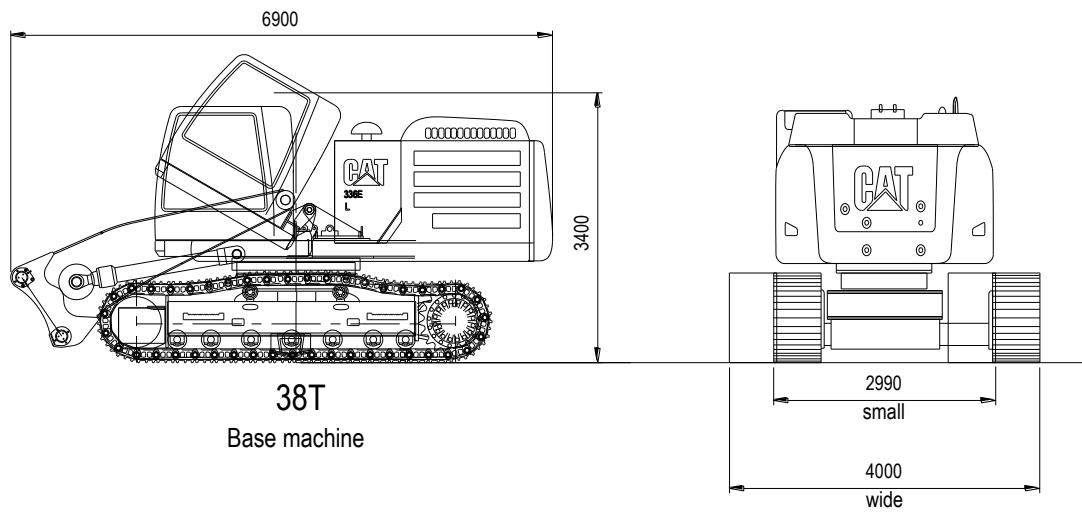
Straight Boom



Bent Boom



Transport



Preliminary weights

Extra options

Cabin

- Armored glass.
- Complete FOPS with removable front.
- Additional windshield spray system.
- Camera system up till 4 camera's, 2 on boom, side and rear.
- Vandal guard.
- Overpressure system.
- 30 degree tilt able.

Boom - Sticks.

- All connections are made with ball valves or Stucchi connectors, fully automatic also available.
- Additional 30 mm free return line.
- Cylinder protection.
- A dust control system with 2 sprinklers on all parts in any configuration.
- All cylinders and pins are Cat® where possible.
- Automatic recognition systems for all boom parts for optimal reach and operation control.

Base machine

- Transport lifting eyes.
- Water pump for dust control.
- Optional water tank on top of counterweight container.
- LED working lights on different positions.

Complete machine

Delivered in standard yellow or customer company colors

CE certification is always included, complete with manual and parts book.

ⁱ This is a preliminary specification which can be changed without prior notice.

- Optional.
- Standard.

Coevorden , The Netherlands Version STC 349E 20.09